

HAVE YOU GOT IT COVERED?

## What is Carbon Monoxide?

Carbon Monoxide is a colourless, odourless, tasteless, poisonous gas that can kill very quickly.

## What causes Carbon Monoxide to leak?

Carbon monoxide is produced when fuels such as gas, oil, coal and wood do not burn fully.

Burning charcoal, running cars and the smoke from cigarettes also produce carbon monoxide gas.

Gas, oil, coal and wood are sources of fuel used in many household appliances, including: boilers, gas fires, central heating systems, water heaters, cookers and open fires.

It is possible to have some background Carbon Monoxide in your home without it being enough to trigger an alarm.

The best way to find this out is to do an AudioLINK+ Data Extraction report from any Aico Carbon Monoxide Alarm via the AudioLINK+ App on your smartphone.

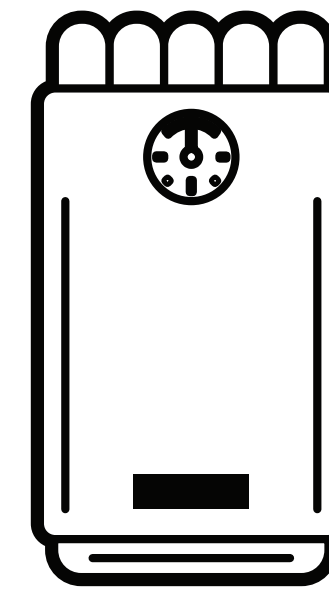
AudioLINK+ can also tell you things such as the sensor status and battery life, to find out more, visit our AudioLINK+ page.

How does **AudioLINK+** work?  
Real time facts... Real time action



**3 simple steps to data extraction**

Find out more at [www.aico.co.uk/audioLINK](http://www.aico.co.uk/audioLINK)



Each year,

**4,000**

are treated at A&E due to Carbon Monoxide poisoning\*

\*NHS England Reference: 170048P, 1<sup>st</sup> April 2019

## KEEP CONNECTED



@AicoLimited



@Aico Ltd



@Aico\_Limited



@aico\_ltd



aicoltd



Aico TV



To sign up to our monthly Newsletter "MissingLINK" please visit [www.aico.co.uk/news-and-events/newsletter](http://www.aico.co.uk/news-and-events/newsletter)

## Did you know...

Every year there are around 60 deaths from accidental Carbon Monoxide poisoning in England and Wales

Carbon Monoxide is produced when fuels such as gas, oil, coal and wood do not burn fully

Incorrectly installed, poorly maintained or poorly ventilated household appliances, such as cookers, heaters and central heating boilers, are the most common causes of accidental exposure to Carbon Monoxide

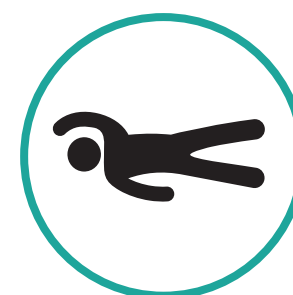
Source:  
\* [www.nhs.uk/](http://www.nhs.uk/) \*

## WHY WOULD YOU RISK IT?

## HAVE YOU...

- TESTED YOUR DETECTORS AT LEAST ONCE THIS MONTH?
- MADE SURE ALL YOUR VENTILATION AREAS ARE CLEAR?
- HAD YOUR COOKERS, HEATERS & BOILERS SERVICED?
- SCHEDULED AN ANNUAL MAINTENANCE CHECK?

Would you know the **6** symptoms of Carbon Monoxide poisoning?



Unconsciousness



Collapse



Dizziness



Breathlessness



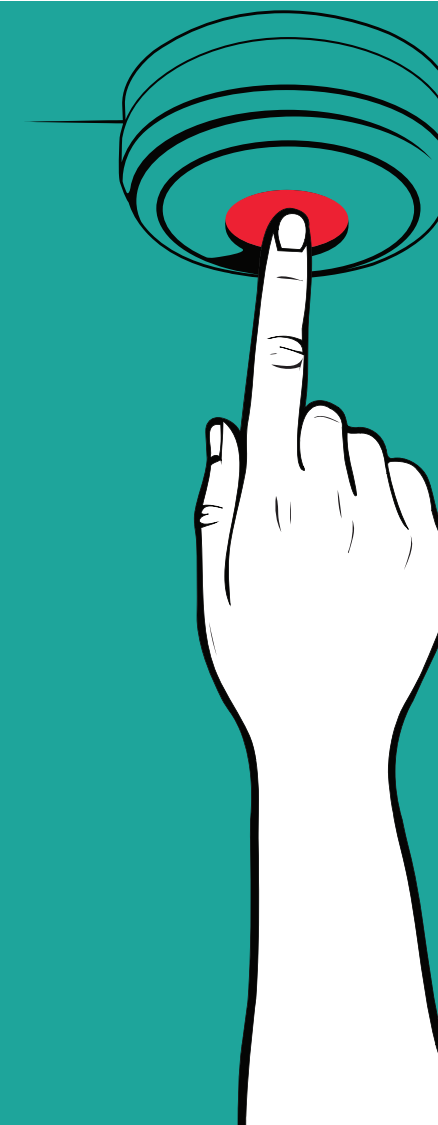
Headache



Nausea

# PUSH THAT TEST BUTTON

#ALARMSSAVELIVES



## With Aico, it's COVERED.

For professional quality, innovation and service, Aico Carbon Monoxide Alarms offer the complete package. Their advanced, high performance technology - with **AudioLINK+** data extraction and **SmartLINK** wireless interconnection - is backed by rigorous 4-stage testing, comprehensive technical support and free training on selection, installation and maintenance.





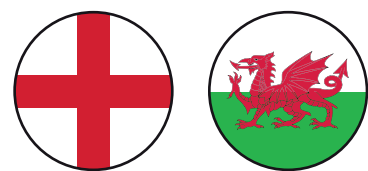
# Stay protected. Fit a Carbon Monoxide alarm.



#AlarmsSaveLives

# Carbon Monoxide Building Regulations

## England and Wales Document J



Requires a BS EN 50291 Kitemarked Carbon Monoxide alarm to be fitted when any new or replacement fuel burning appliance is installed. In Wales, this also includes cooking appliances. Alarms can be mains or battery powered. If the alarm is battery powered then the battery should last for the life of the alarm.

### Carbon Monoxide alarms should be fitted in:

- The room with the appliance or, if it is an enclosed boiler, just outside the enclosure.
- Any room that has a flue running through it.
- Alarms can be mains or battery powered. If the alarm is battery powered then the battery should last for the life of the alarm.



## Scotland Technical Handbook



Requires a BS EN 50291 Kitemarked Carbon Monoxide alarm to be fitted when any new or replacement fuel burning appliance is installed (except cookers). This covers any fuel burning appliance, including those that burn gas, oil, coal and wood.

### Carbon Monoxide alarms should be fitted in:

- The room with the appliance or, if it is an enclosed boiler, just outside the enclosure.
- Any room that has a flue running through it.
- Alarms can be mains or battery powered. If the alarm is battery powered then the battery should last for the life of the alarm.



## Northern Ireland Technical Booklet L



Requires a BS EN 50291 Kitemarked Carbon Monoxide alarm to be fitted when any new or replacement fuel appliance is installed (except cookers). This covers any fuel burning appliance, including those that burn gas, oil, coal and wood.

### Carbon Monoxide alarms should be fitted in:

- The room with the appliance or, if it is an enclosed boiler, just outside the enclosure.
- Alarms can be mains or battery powered. If the alarm is battery powered, then the battery should last for the life of the alarm.



If you would like more advice on how to site alarms effectively throughout a property, visit our page on alarm siting. If you would like more information on the standards and regulations for a property outside of these guidelines please contact our Technical Team, [technical@aico.co.uk](mailto:technical@aico.co.uk).

an  Company